



Plan Malawi - MOBILIZING TRADITIONAL LEADERS

Mulanje Total Sanitation Project

Thoko Kaitane | Chimwemwe Kapichi | Aug 2017



The CS WASH Fund is supported by the Australian Government and managed by Palladium International Pty Ltd.

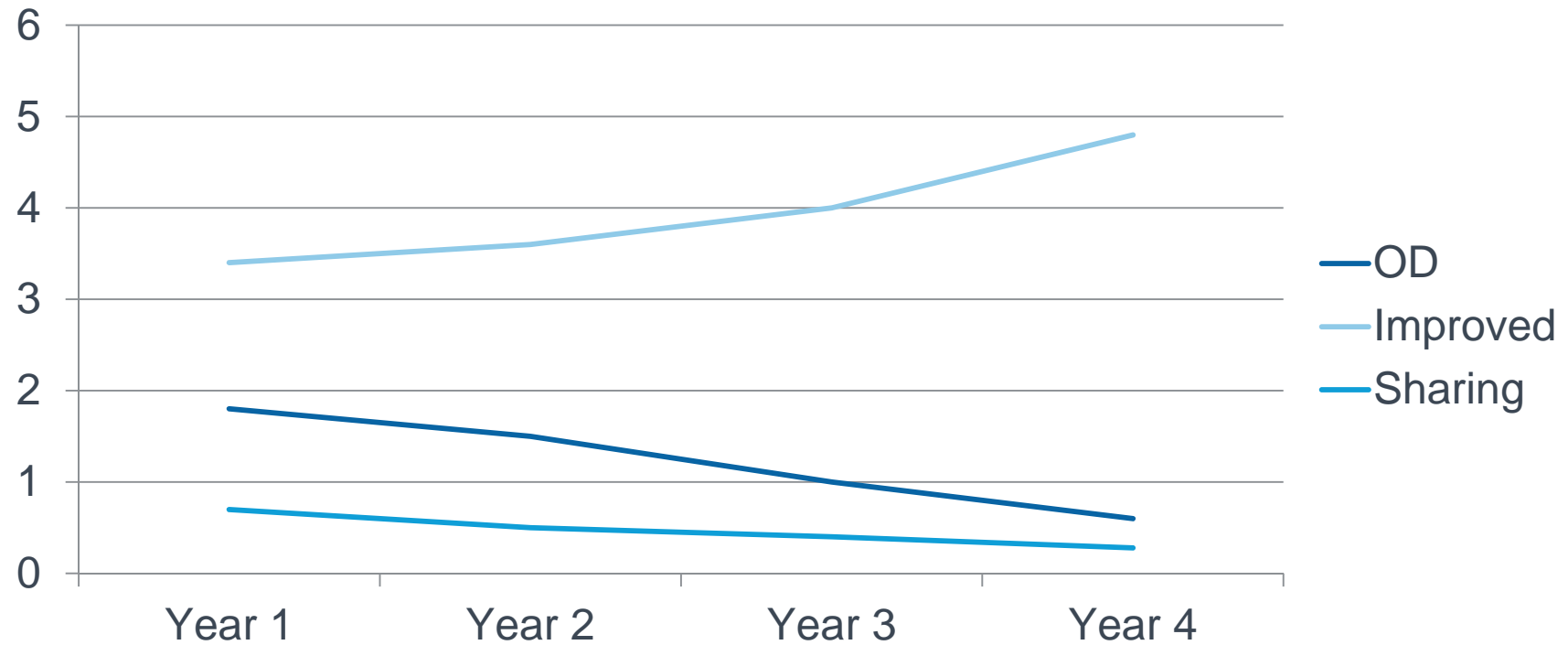
Mulanje District, Malawi

- Borders Phalombe, Thyolo, Chiradzulu, Zomba Districts and Mozambique to the East and South.
- District is 2056 km²
- 6 Traditional Authorities
- 3 Sub- Traditional Authorities
- 81 Group Village Heads
- 546 Villages
- 153, 593 Households
- 162 Primary schools
- 26 market centers



Mulanje
Pop 717,824

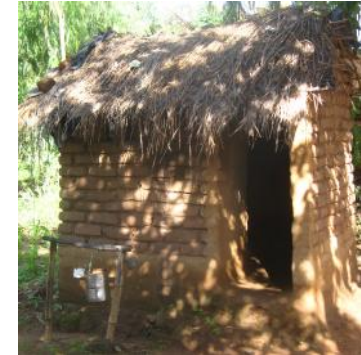
Graph on open defecation, improved & sharing of latrines



What was Plan Malawi working on?

Some of the key project aims include:

- District-wide hygiene and sanitation activities
- 546 communities (718,000 people), targeting 255 ODF
- 330,000 additional people accessing toilets and handwashing facilities
- Improved WASH practice and knowledge in 160 primary schools
- Establish rural sanitation market demand and supply



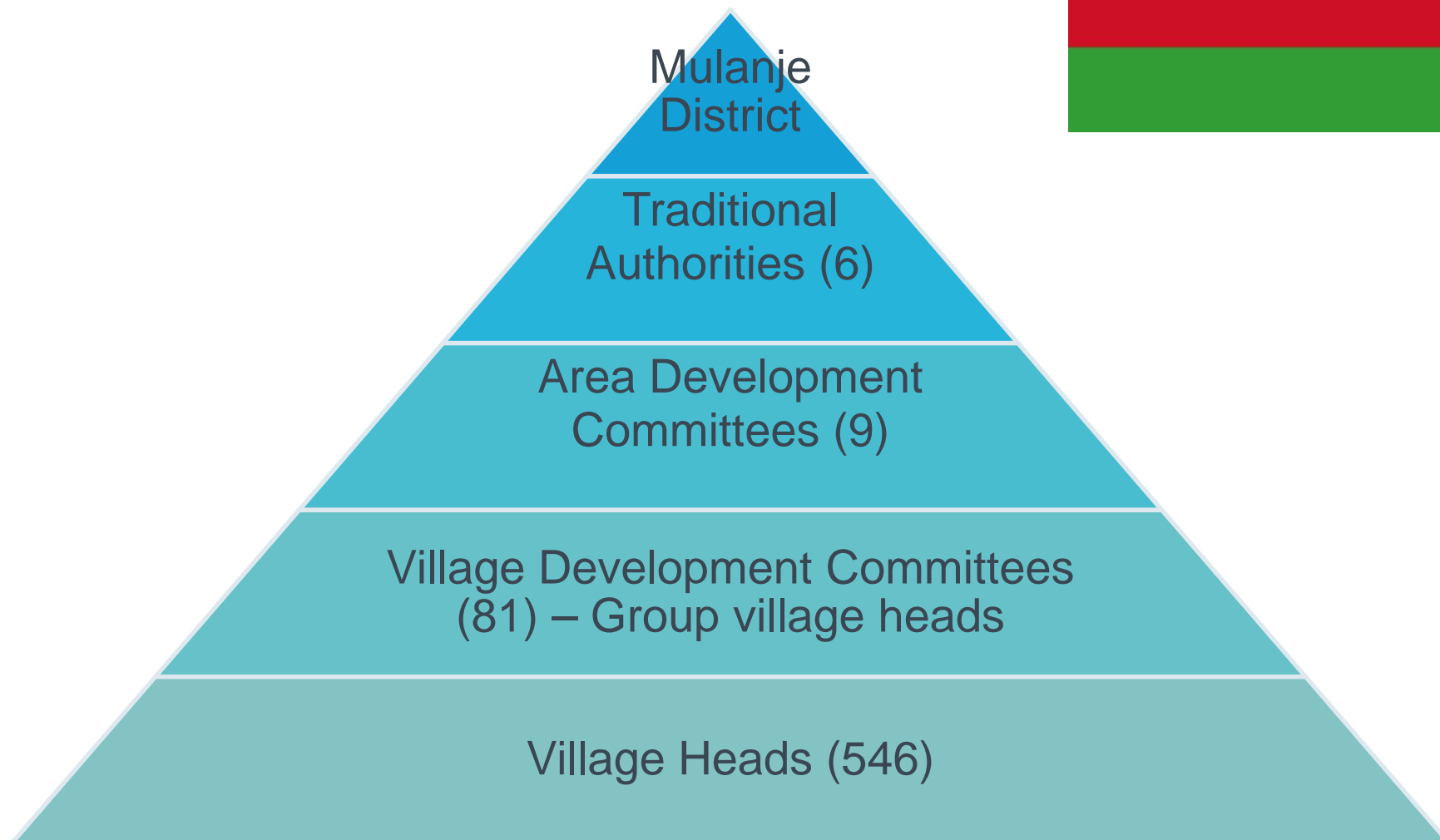
What approaches did Plan Malawi adopt?

Capacity building of change agents

- District and Local government partnership
- Government capacity building and system strengthening
- Engagement of traditional authorities & structures
- CLTS, SLTS
- Promotion of social inclusion through dialogue circles
- Hygiene promotion
- Sanitation market development



Traditional Structure



Engagement of traditional leaders

And connecting traditional structures with government

- Engagement of entire traditional structures (village to TA)
- Training traditional authorities in sanitation and hygiene
- Exchange visits to other Districts to witness impact and influence of other traditional leaders
- Linking traditional structures with government system
- Resourcing movement of traditional leaders
- Celebration and sharing of success to acknowledge and motivate leaders

What's changed?

Traditional leaders are now:

- Working with community WASH structures
- Establishing and advocating for Water and Sanitation Policies (community by laws) at grassroots level
- conducting intensive follow up and monitoring visits to pursue community ODF.
- Creating new expectations and accountabilities in traditional structures
- Collaborating more with Health Surveillance Assistants (HSA), Natural Leaders (NL) and Village Health Committees (VHC)
- demanding sanitation and hygiene public places



Traditional Authorities address group village heads during a meeting



Evidence that the approach is working

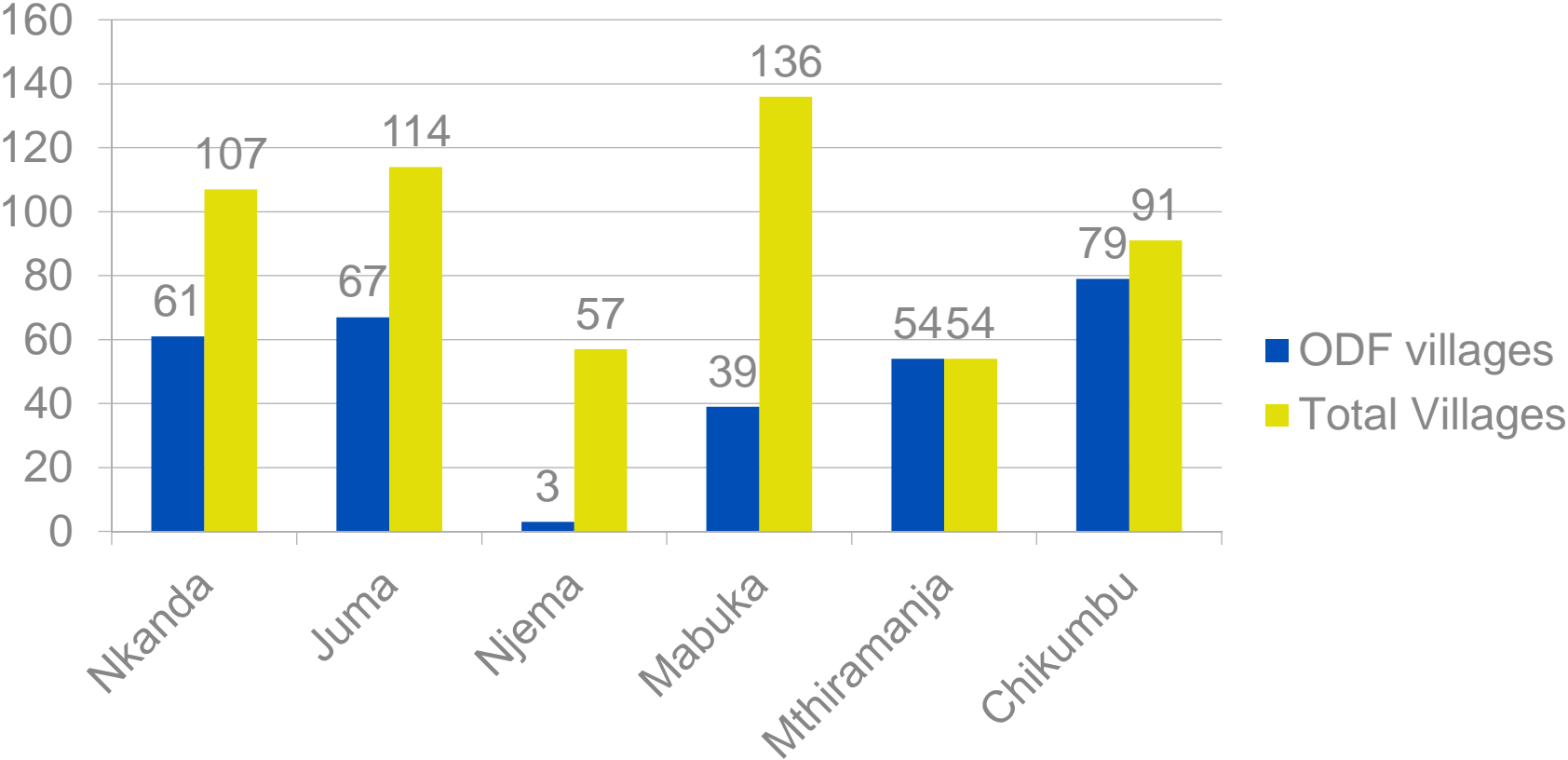
- Increased engagement of Traditional Authorities accelerated progress (from 18-263 ODF villages in 18mths)
- TA Mthiramanja achieved ODF within 3 months of increased leadership engagement
- Traditional structures supporting ‘sanitation for all’ evident by increase in accessible latrines
- Traditional authorities and structures working hand in hand with government to pursue ODF status



TA Mthiramanja ODF certification by Government Officials

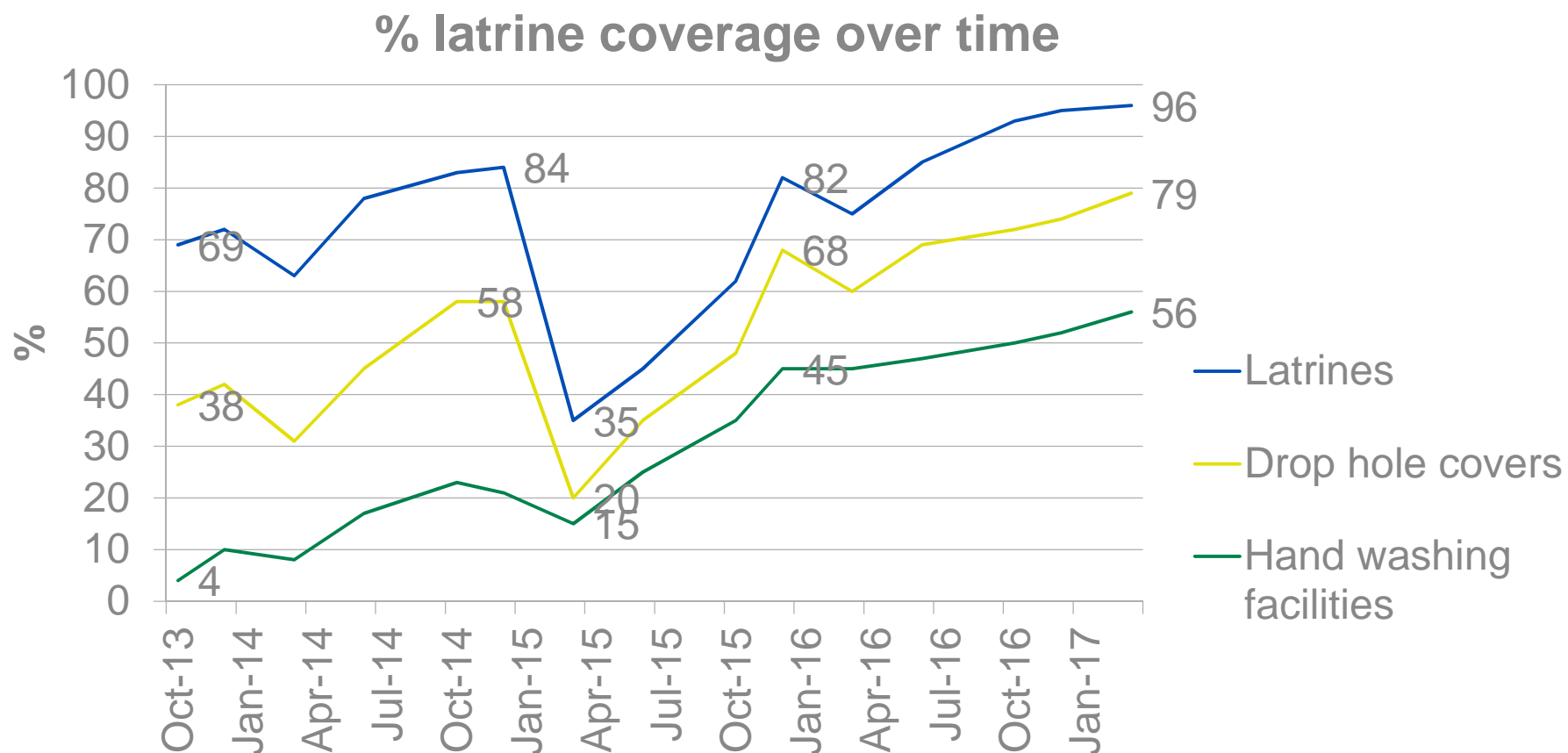
Progress towards District-wide ODF

ODF Villages by TA



Project progress in key areas

In Mulanje latrine coverage has reached 96%



Factors for success

These factors were commonly identified by leaders:

- **Clear goals and problem articulation** to create buy-in of leaders
- **Benchmarking success** of leaders to play on their **pride** to motivate them
- Leaders **engaging and empowering** all players within the structure
- Providing **responsibility and accountability** to players within the structure to play their part



*TA Mthiramanja ODF
certification by Government
Officials*

Advice to other CSOs

- Collaboration between district government and local leadership results in positive results and sustainability
- Chieftainship wrangles and weak leadership have resulted in lagging of communities despite structures.
- Where traditional leadership is weak, people look to government staff for leadership
- Direct involvement of Traditional Authorities to work with local structures in monitoring visits improves results

For more information

Postcards from the field:

- Success Factors:

<http://www.cswashfund.org/our-work/postcards-from-the-field/leaders-influence-critical-factors-achieving-odf-mulanje-district>

- Contact Thoko Kaitane, Plan Malawi National WASH Program Manager

Thoko.Kaitane@plan.org.au



Zikomo!

